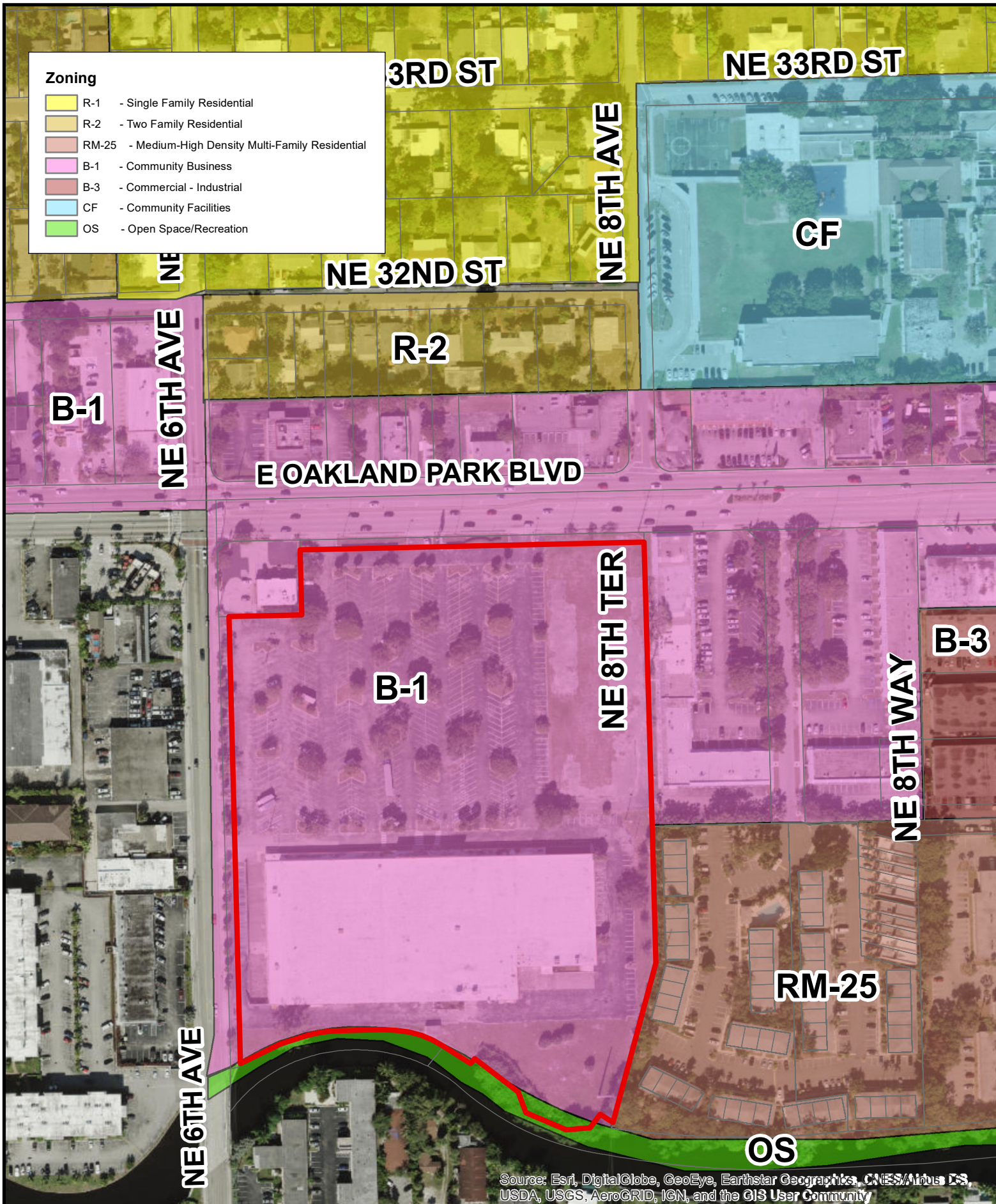


# Zoning

- R-1 - Single Family Residential
- R-2 - Two Family Residential
- RM-25 - Medium-High Density Multi-Family Residential
- B-1 - Community Business
- B-3 - Commercial - Industrial
- CF - Community Facilities
- OS - Open Space/Recreation



Source: Esri, DigitalGlobe, GeoEye, Earthstar Geographics, CNES/Airbus DS, USDA, USGS, AeroGRID, IGN, and the GIS User Community



670 E OAKLAND PARK BLVD

Zoning Map

0

275

Feet

