

Oakland Park

Tri-Rail Coastal Link – Station Area Presentation



Work-In-Progress Presentation

May 15, 2019

A Multi-Agency Approach ...



... that includes the Community.

Project Objectives

Develop a Station Area Concept Plan for Future Tri-Rail Coastal Link Service that is Consistent with the City's Vision for Future Growth & Development

Consider Transportation Connections ...
Bus, Trolley, Car, Rideshare, Cyclists, Pedestrians

Illustrate Concept Options for City Consideration

Provide Assessment of possible Public Market

Improve the Quality of Life ~ Create Opportunities

A Historic Moment

This is the First Opportunity for the
Community to Develop
Concepts for a
Tri-Rail Coastal Link Station.

Tri-Rail Coastal Link





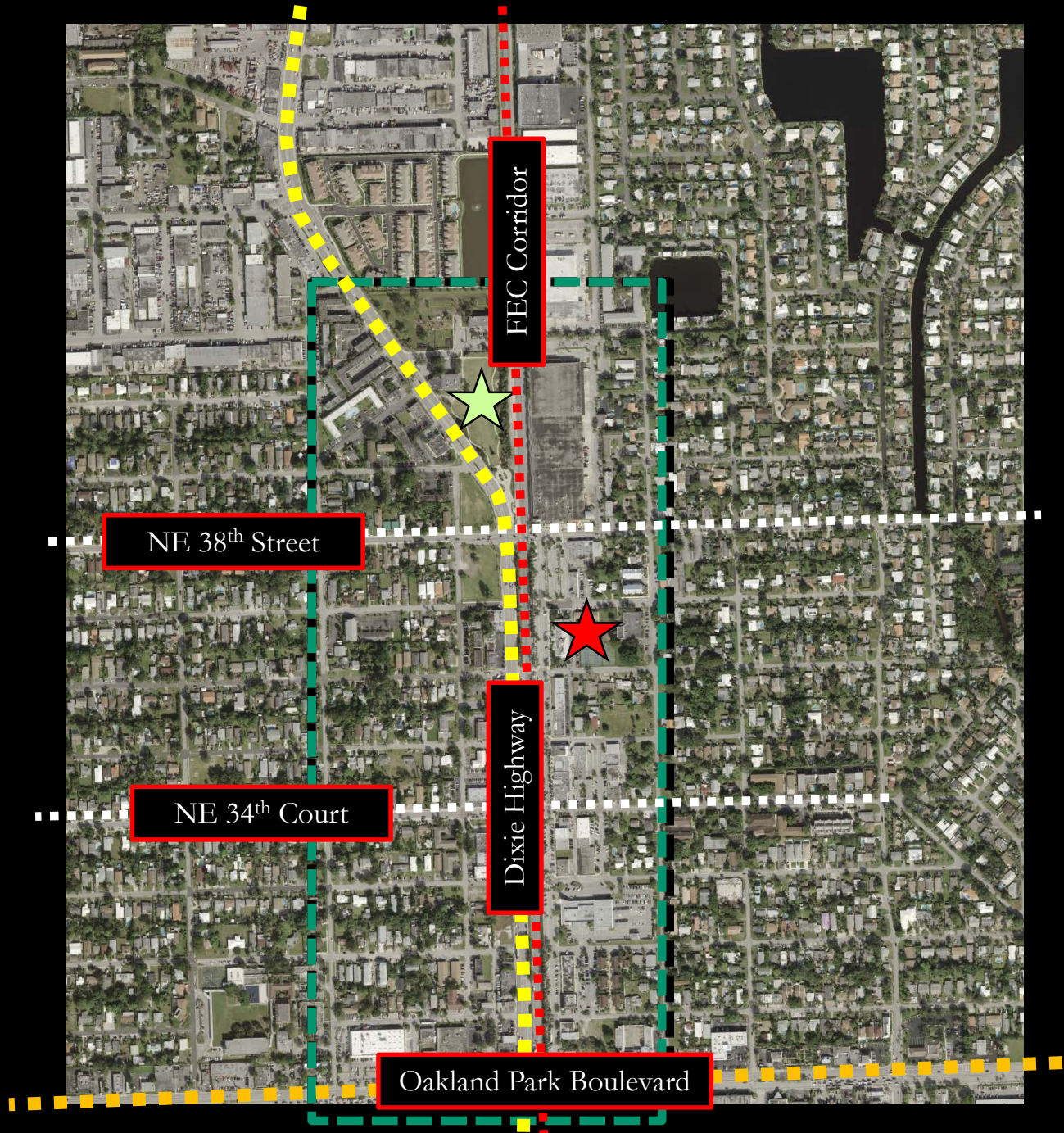
Study Area

★ City Hall

★ Jaco Pastorius Park



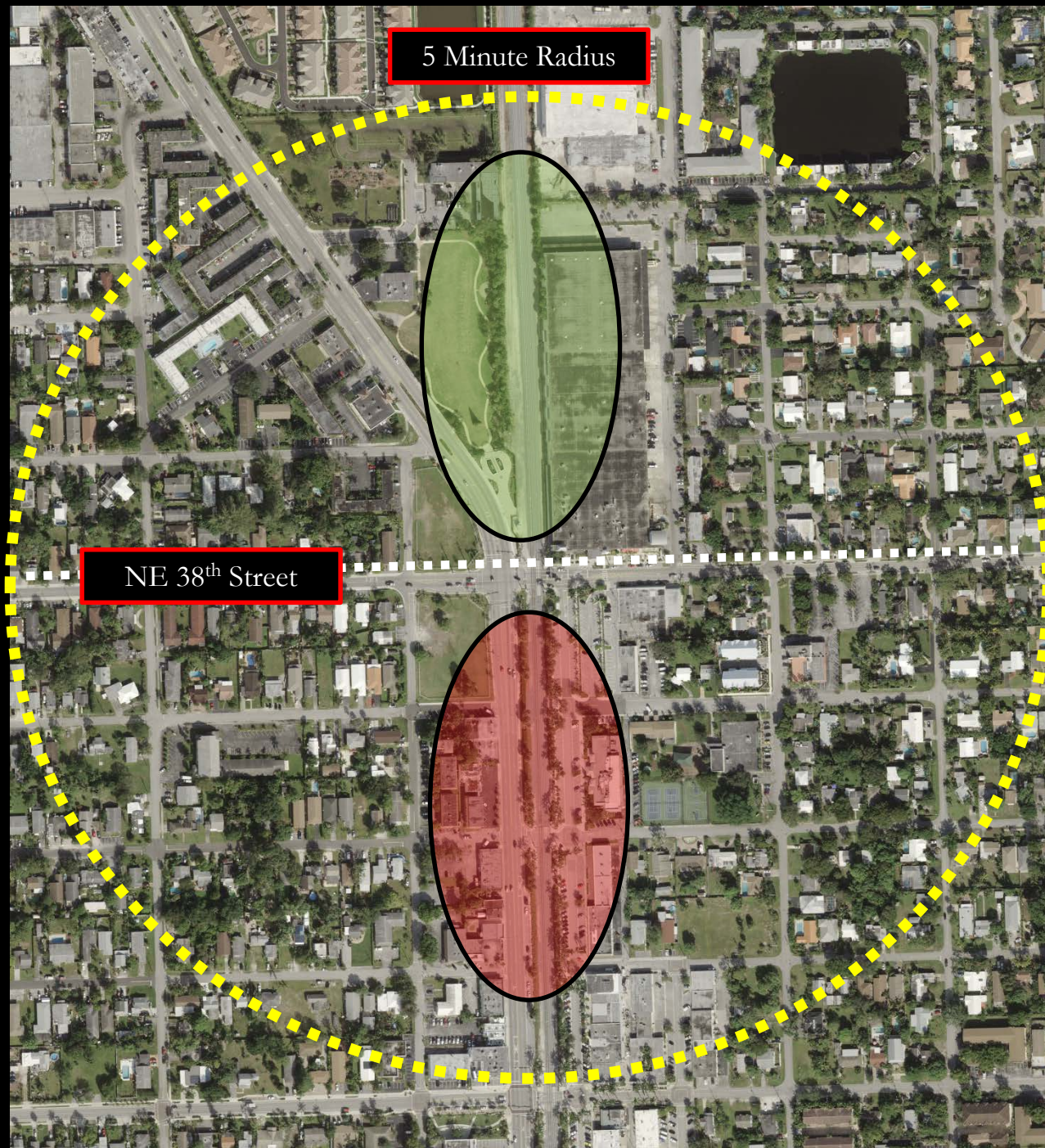
Downtown
Mixed-Use District



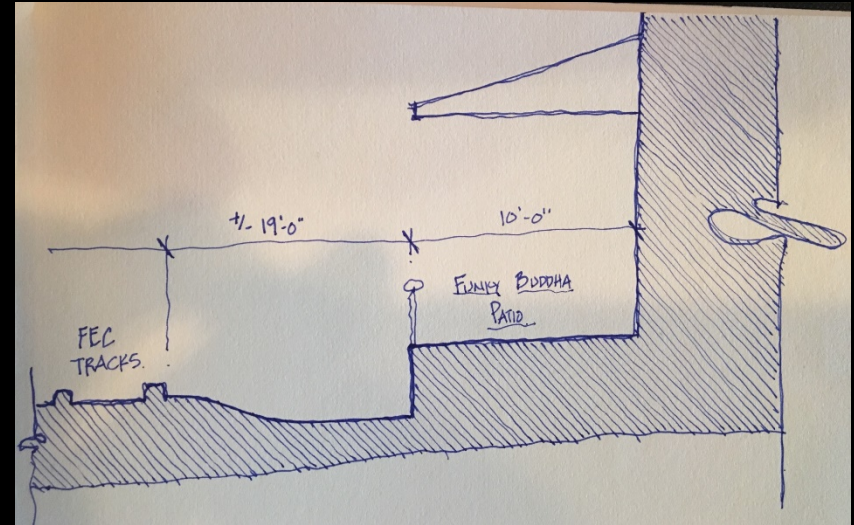
Study Area

North of N.E. 38th Street
(Jaco Pastorius Park)

South of N.E. 38th Street

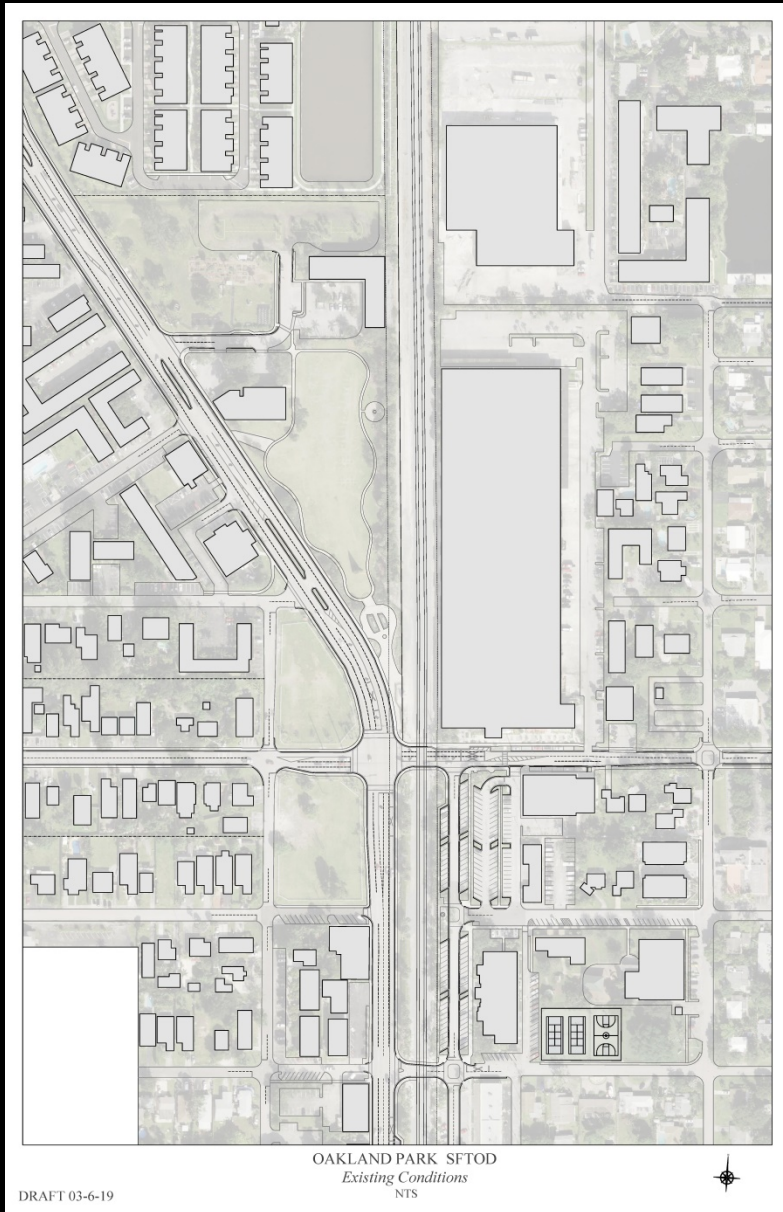


Study Area & Testing



Jaco Pastorius Park

Commuter Rail Platform Location



Existing Conditions

Platform Locations

South of 38th – Along Main Street

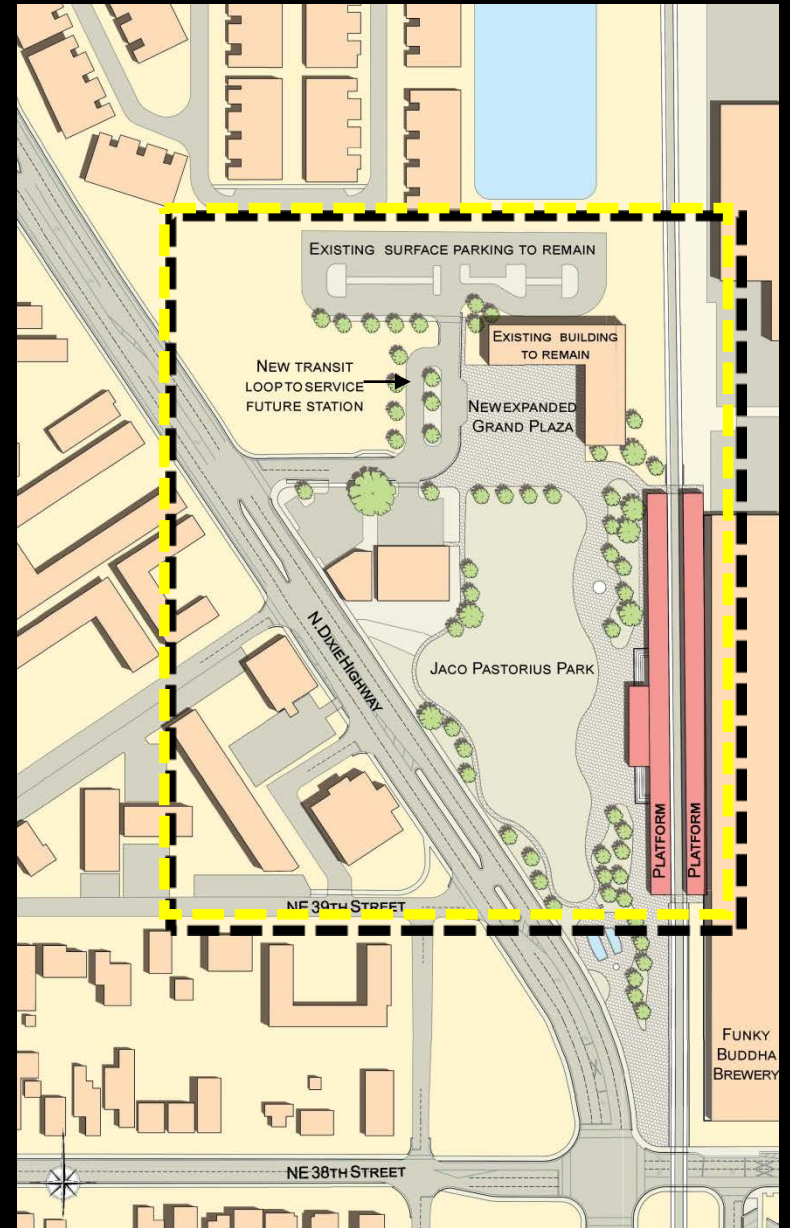


North of 38th – Jaco Pastorius Park



Options

Platform Location



Jaco Pastorius Park

Platform Design



Delray Beach



Hollywood



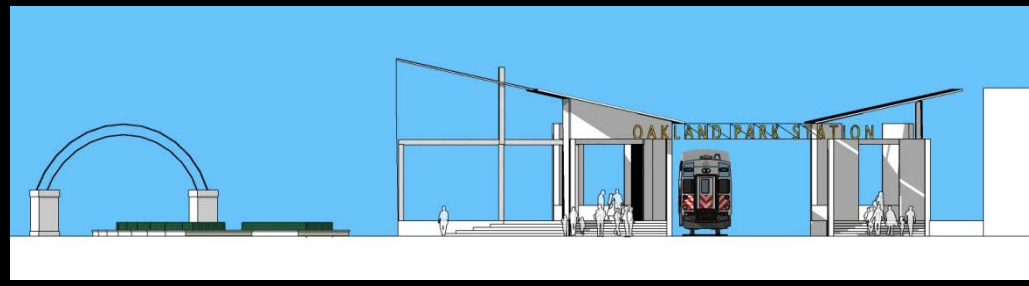
Wilton Manors

Other Cities Ideas

Platform Concept

*What is the Appropriate
Aesthetic for
Oakland Park?*

Platform Concept



Jaco Pastorius Park

Platform Concept



Jaco Pastorius Park

Platform Concept



Taking Cues from Existing Civic Art

Platform Concept



Jaco Pastorius Park

Platform Concept



Jaco Pastorius Park

Public Market Assessment

- Understand programming opportunities & development characteristics of a public market that could be part of other Downtown uses at the proposed station location;
- Profile selected existing food halls/markets in Florida & across the U.S.;
- Assess current demographic conditions in a two-mile Primary Trade Area to understand likely supportable uses & type of market/food hall.



Managing Expectations

Public Market Assessment

- Anticipated uses and functions of the Oakland Park Public Market could include:
 - Fresh flowers and produce;
 - Culinary activities and test kitchen;
 - Small restaurants and prepared food;
 - Artisanal and farm-to-table retailers (specialty offerings);
- While this assessment is not a feasibility study, comparable data suggests that a public market in Oakland Park should be in the range of 20,000 SF to 25,000 SF.



Initial Findings

Next Steps

- Gain Consensus on Station Location.
- Submit Station Area Master Plans to South Florida Regional Transportation Authority (SFRTA) to be transmitted to Federal Transit Administration (FTA) for funding consideration (no timeline for funding):
 - Miami
 - North Miami Beach
 - Hollywood
 - Wilton Manors
 - Oakland Park
 - Delray Beach
 - Palm Beach Gardens
- Keep Doing What You Are Doing!

Implementing the City's Vision

Oakland Park

Tri-Rail Coastal Link – Station Area Presentation



Thank You