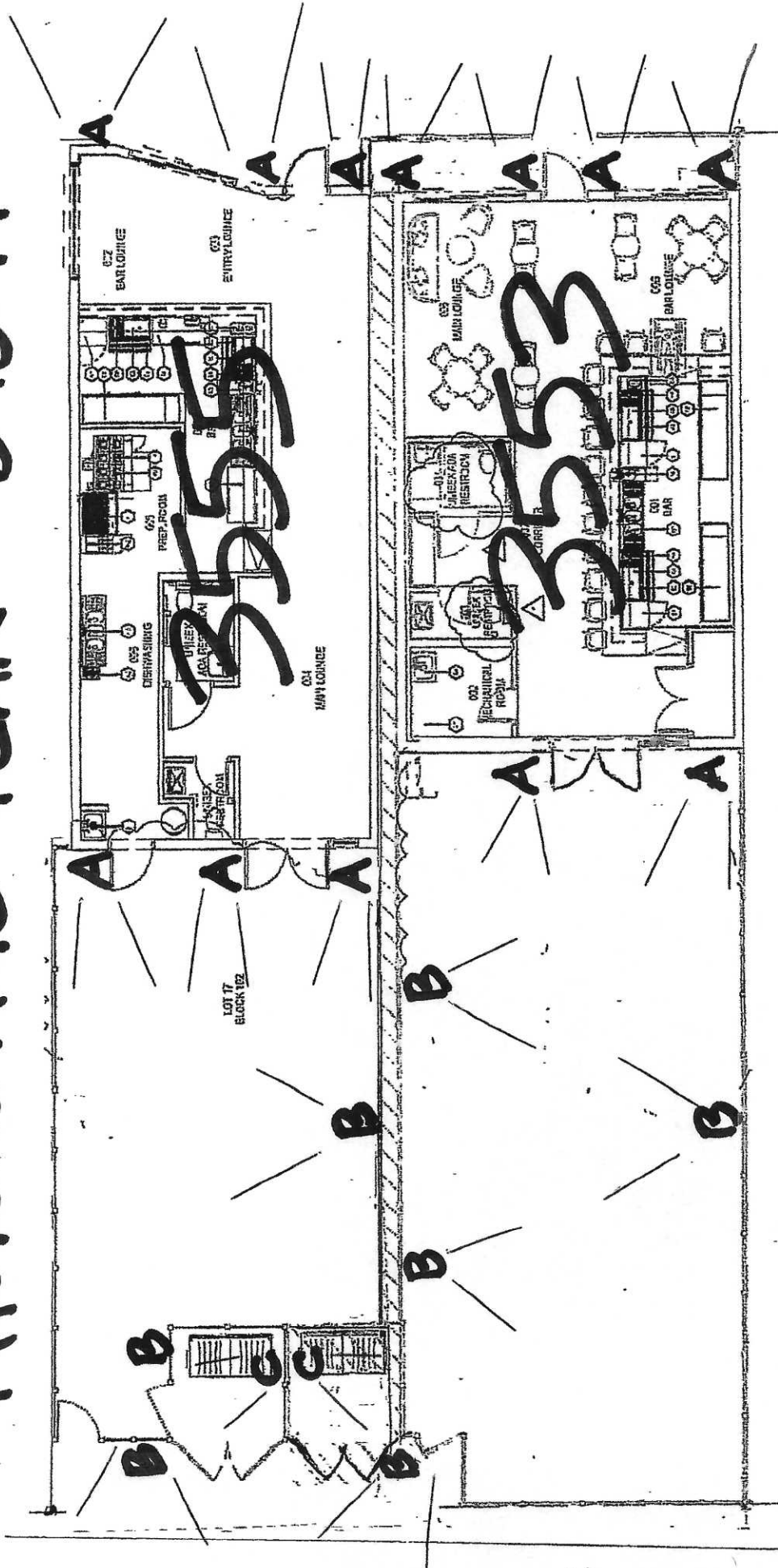


# PHOTOMETRIC PLAN 6-18-19



Area SF	Required Footcandles per SF	Required Lumens	Fixture Type	Quantity of Fixtures	Lumens per fixture	Total	
						Lumens Provided	Lumens Provided
100	4	400	A	4	690	2,760	
100	4	400	A	3	690	2,070	
1000	4	4000	A	2	690	1,380	
			B	3	1000	3,000	4,380 TOTAL
750	4	3000	A	3	690	2,070	
			B	2	1000	2,000	4,070 TOTAL
100	4	400	B	1	1000	1,000	
100	4	400	B	1	1000	1,000	
75	5	375	C	1	4000	4,000	
75	5	375	C	1	4000	4,000	

Front Entrance (N Dixie)

3553

3555

Rear Patio Seating Area

3553

3555

Rear Gates (city lot side)

3553

3555

Trash Enclosure

3553

3555



# FOOTCANDLE LIGHT GUIDE

Footcandles are the most common unit of measure used by lighting professionals to calculate light levels in businesses and outdoor spaces. A footcandle is defined as the illuminance on a one square foot surface from a uniform source of light. The Illuminating Engineering Society (IES) recommends the following footcandle levels to ensure adequate illumination and safety for occupants. Below is a guideline for common areas to assist in achieving appropriate light levels with the greatest energy-efficiency.

Building Area & Task	Average Maintained Footcandles (Horizontal) (FC)	Range of Maintained Footcandles (Horizontal) (FC)	Average Maintained Footcandles (Vertical) (FC)	Range of Maintained Footcandles (Vertical) (FC)	Comments
<b>WAREHOUSING &amp; STORAGE</b>					
Bulky Items—Large Labels	10		5		
Small Items—Small Labels	30		15		
Cold Storage	20	10 - 30	10	5 - 15	
Open Warehouse	20	10 - 30			
Warehouse w/Aisles	20	10 - 30	10	5 - 15	
<b>COMMERCIAL OFFICE</b>					
Open Office	40	30 - 50			@30" Above Finished Floor (AFF)
Private Office	40	30 - 50			@30" AFF
Conference Room	30				Matte surface reflectance for the table 40% recommended
Restroom	18	7.5 - 30			
Lunch & Break Room	15	5 - 20			
<b>EDUCATIONAL (SCHOOLS)</b>					
Classroom	40	30 - 50			@30" AFF
<b>Gymnasium</b>					
Class I (Pro or Div. 1 College)	125		30		
Class II (Div. 2 or 3 College)	80		20		
Class III (High School)	50		150		
Class IV (Elementary)	30		100		
Auditorium	7.5	3 - 10	5	2.5 - 10	
Corridor	25	10 - 40			

This guide is a collaborative effort of Energy Trust of Oregon and the Lighting Design Lab, Seattle, Washington.

Building Area & Task	Average Maintained Footcandles (Horizontal) (FC)	Range of Maintained Footcandles (Horizontal) (FC)	Average Maintained Footcandles (Vertical) (FC)	Range of Maintained Footcandles (Vertical) (FC)	Comments
<b>INDUSTRIAL/MANUFACTURING</b>					
<b>Assembly</b>					
Simple (Large Item)	30	15 - 60	30	15 - 60	
Difficult (fine)	100	50 - 200	100	50 - 200	
<b>Component Manufacturing</b>					
Large	30	15 - 60	30	15 - 60	
Medium	50	25 - 100	50	25 - 100	
<b>EXTERIOR</b>					
Parking (Covered)	5				1FC min, 10:1 Max to Min Uniformity
<b>Parking (Open) (Medium Activity)</b>					
Lighting Zone 3 (Urban)	1.5	.75 - 3	.8	.4 - 1.6	
Lighting Zone 2 (suburban)	1	0.5 - 2	.6	.3 - 1.2	
Gas Station Canopy	12.5	10 - 15			
Safety (Building Exterior)	1	0.5 - 2			If security is an issue—raise average level to 3
<b>RETAIL</b>					
General Retail (Ambient)		50			
Department Store	40	20 - 80	15	7.5 - 30	
Perimeter			75	35 - 150	
Accent Lighting (Displays)					3 - 10 f.c. greater than ambient light levels
<b>AUTOMOTIVE</b>					
Showroom	50	25 - 100	10	5 - 20	
Service Area	50	25 - 100	30	15 - 30	
<b>Sales Lot (Exterior)</b>					
Lighting Zone 3 (Urban)	20	10 - 40	20	10 - 40	
Lighting Zone 2 (Suburban)	15	7.5 - 30	15	7.5 - 30	
<b>GROCERY</b>					
Circulation	20	10 - 40	7.5	3.5 - 15	
General Retail	50	25 - 100	20	10-40	
Perimeter			50	25-100	
<b>BANKING</b>					
ATM	20	10-40	15		Vertical at face of ATM

**NOTES:**

- This guide is based on information gathered from the IES 'The Lighting Handbook 10th Edition. It is highly recommended that all lighting professionals refer to the full IES guide when specifying lighting projects.
- At least half of users are in the 25 - 65 age range
- Horizontal—horizontal plane the average maintained foot-candles are measured
- Vertical—vertical plane the average maintained foot-candles are measured
- It is the responsibility of the specifier to determine and provide appropriate lighting levels for each space

Energy Trust of Oregon

421 SW Oak St., Suite 300, Portland, OR 97204

1.866.368.7878

503.546.6862 fax

energytrust.org

Energy Trust of Oregon is an independent nonprofit organization dedicated to helping utility customers benefit from saving energy and tapping renewable resources. Our services, cash incentives and energy solutions have helped participating customers of Portland General Electric, Pacific Power, NW Natural and Cascade Natural Gas save on energy costs. Our work helps keep energy costs as low as possible, creates jobs and builds a sustainable energy future. Printed with vegetable-based inks on paper that contains 100% post-consumer waste. 7/13

Rev.07/2013

Home / Lighting / Outdoor Lighting / Outdoor Wall Lighting / Outdoor Sconces

Internet #300120041

Model # KB 06005-DEL

Store SKU #1002067341

FIXTURE 'A'  
FRONT +  
REAR  
FACADES



Live Chat

Share

Save to Favorites

Print

Exclusive

### Home Decorators Collection

## Black Medium Outdoor Seeded Glass Dusk to Dawn Wall Lantern

★★★★★ (208)

[Write a Review](#)

[Questions & Answers \(81\)](#)

- Dusk-to-dawn feature offers added security
- LED-integrated- no bulbs needed
- Simple black finish complements a wide variety of decors

**\$74<sup>97</sup>**

**Save up to \$100** on your qualifying purchase.  
Apply for a Home Depot Consumer Card

# Product Overview

---

This craftsman detailed outdoor light has a built-in dusk-to-dawn feature for added security to your home. The fixture is LED integrated with no bulbs needed and uses only than 12.45-Watt of energy. The fixture comes in a black finish that will match any decor.

- Dusk-to-dawn photocell sensor
- Seeded glass shade
- Outdoor weather resistant
- Black finish
- Matching pendant available
- Position the photocell fixture so that light from any other fixture or light source does not shine directly onto the "eye," as this will interfere with the normal operation of the photocell fixture

Live Chat

## Info & Guides

- Instructions / Assembly
- Warranty

You will need Adobe® Acrobat® Reader to view PDF documents. Download a free copy from the Adobe Web site.

---

## More In This Collection From Home Decorators Collection (1)

### YOUR CURRENT PRODUCT



**\$74.97**

Down

Lumens

690

Number of Lights

1 Light

Outdoor Lighting Features

Dusk to Dawn

Package Quantity

1

Power Type

Hardwired

Product Size

Small

Product Weight (lb.)

3.52 lb

Returnable

90-Day

Sconce Type

Wall Lantern

Voltage Type

Line Voltage

Watt Equivalence

100

 Live Chat



Home / Lighting / Outdoor Lighting / Outdoor Wall Lighting / Outdoor Sconces

Internet #206800627

Model # LED-SLR12BZ

FIXTURE 'B'  
COURTYARD  
+  
REAR  
GATE



Share

Save to Favorites

Print

**Amax Lighting**

Globe Porch SLR Bronze Outdoor Wall Fixture

★★★★★ (11)

[Write a Review](#)

[Questions & Answers \(3\)](#)

**\$42<sup>51</sup>**

**Save up to \$100** on your qualifying purchase.  
Apply for a Home Depot Consumer Card

☐ **LET'S PROTECT THIS.**

Add a 2-year Home Depot Protection Plan for **\$6.00**  
[Learn More](#)

Quantity

-

1

+

areas. These LED wall packs are designed and built to be energy efficient and an alternative to fluorescent, metal halides and high pressure sodium lights. The housing and diffuser are made with durable materials. Suitable for wet locations. Available in white and bronze finishes. Included are rubber sensor covers for manual operations using an on and off switch. Floodlight with dusk to dawn sensor. Built-in 12-Watt LED array. Light output is 1000 Lumens. Comparable to a 75-Watt incandescent bulb. Wet rated for all types of weather.

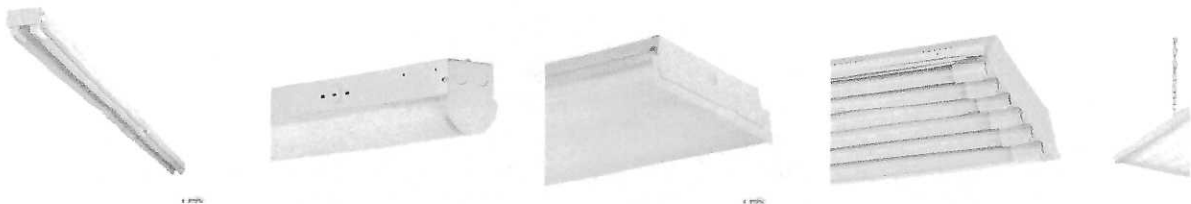
- Energy efficient LED technology that saves you money on utility bills
- Housing and diffuser are made with durable weather resistant plastic materials
- Design feature and benefit, easy to remove and clean lens design for simple cleaning and maintenance
- Can be ceiling or wall mounted horizontally or vertically
- 50,000 hours life span, no bulbs to replace
- Equipped with advance dusk to dawn photocell sensor
- All weather resistant design for new and existing residential and commercial applications
- Includes wire ties and a photocell sensor lens cover for manual on and off operations
- ETL listed and wet location approved
- [Click here for more information on Electronic Recycling Programs](#)

### Info & Guides

- [Installation Guide](#)
- [Specification](#)
- [Warranty](#)

You will need Adobe® Acrobat® Reader to view PDF documents. [Download a free copy from the Adobe Web site.](#)

## Sponsored Products





FIXTURE C'  
TRASH  
AREAS



Share

Save to Favorites

Print

## Honeywell

### 42-Watt Titanium Gray Integrated LED Outdoor Wall Pack Light

★★★★★ (20)

[Write a Review](#)

[Questions & Answers \(17\)](#)

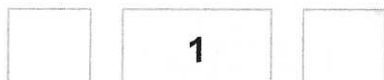
**\$51<sup>84</sup>**

**Save up to \$100** on your qualifying purchase.  
Apply for a Home Depot Consumer Card



#### LET'S PROTECT THIS.

Add a 2-year Home Depot Protection Plan for **\$12.00**  
[Learn More](#)



illumination for your business, home or outdoor workspace. Provided hardware mounts directly for quick and easy installation. The Honeywell LED Rectangular Security Light comes with a 5 year manufacturer warranty.

- Watts used: 42-Watt
- Voltage: 120-Volt
- Brightness: 4000 Lumens
- LED Life Hours: 25000 Hours
- Energy Star: yes
- Cool to the touch
- Contains no mercury
- [Click here for more information on Electronic Recycling Programs](#)

#### Info & Guides

- Full Product Manual
- Warranty

You will need Adobe® Acrobat® Reader to view PDF documents. Download a free copy from the Adobe Web site.

Live Chat

## Sponsored Products



**Lithonia Lighting**  
8 ft. 90-Watt White  
Integrated LED

(337)

**\$89<sup>97</sup>**



**Lithonia Lighting**  
Contractor Select  
White and Red

(14)

**\$38<sup>00</sup>**



**Lithonia Lighting**  
4 in. Matte White  
Recessed Open

(0)

**\$17<sup>33</sup>**



**Hampton Bay**  
Stoneridge 52 in.  
LED Indoor

(131)

**\$89<sup>97</sup>**