



Residential Design & Compatibility Presentation

Presentation to Neighborhood Associations

Background

- City is seeing an increase in single-lot infill development within the City.
- Staff seeks to:
 - Protect the character of established neighborhoods;
 - Ensure that residential infill development does not lead to disproportionately-sized homes affecting the existing neighborhoods; and
 - Safeguard to require new developments to be compatible in scale and bulk with surrounding properties.

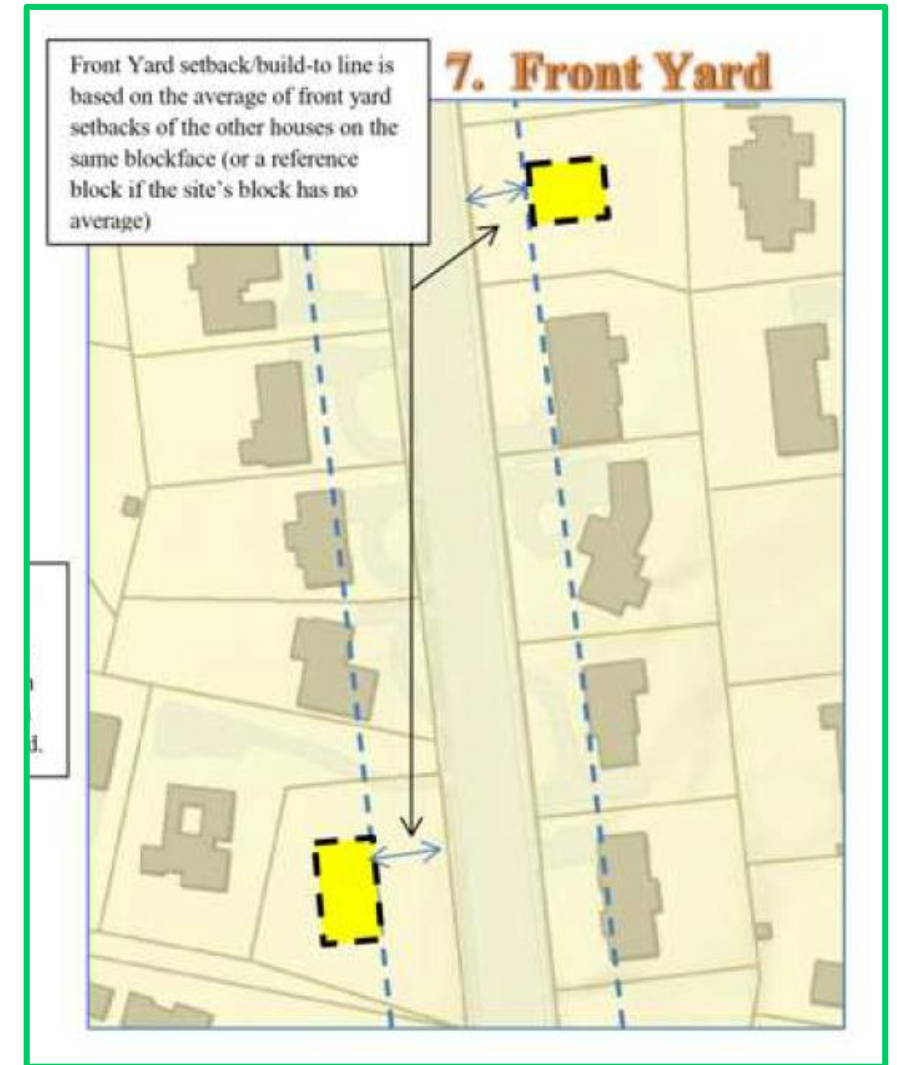
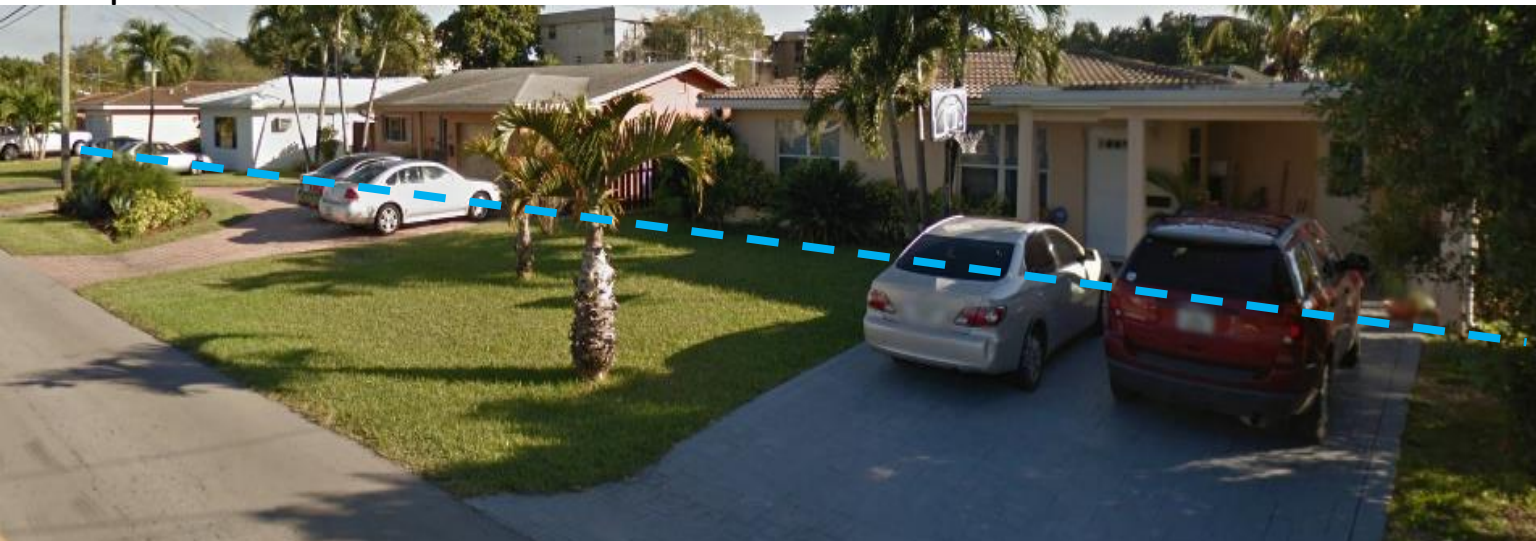


Strategies – Front Setback

Incompatible

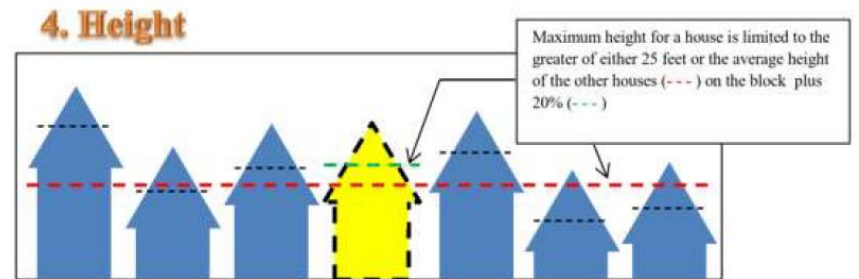
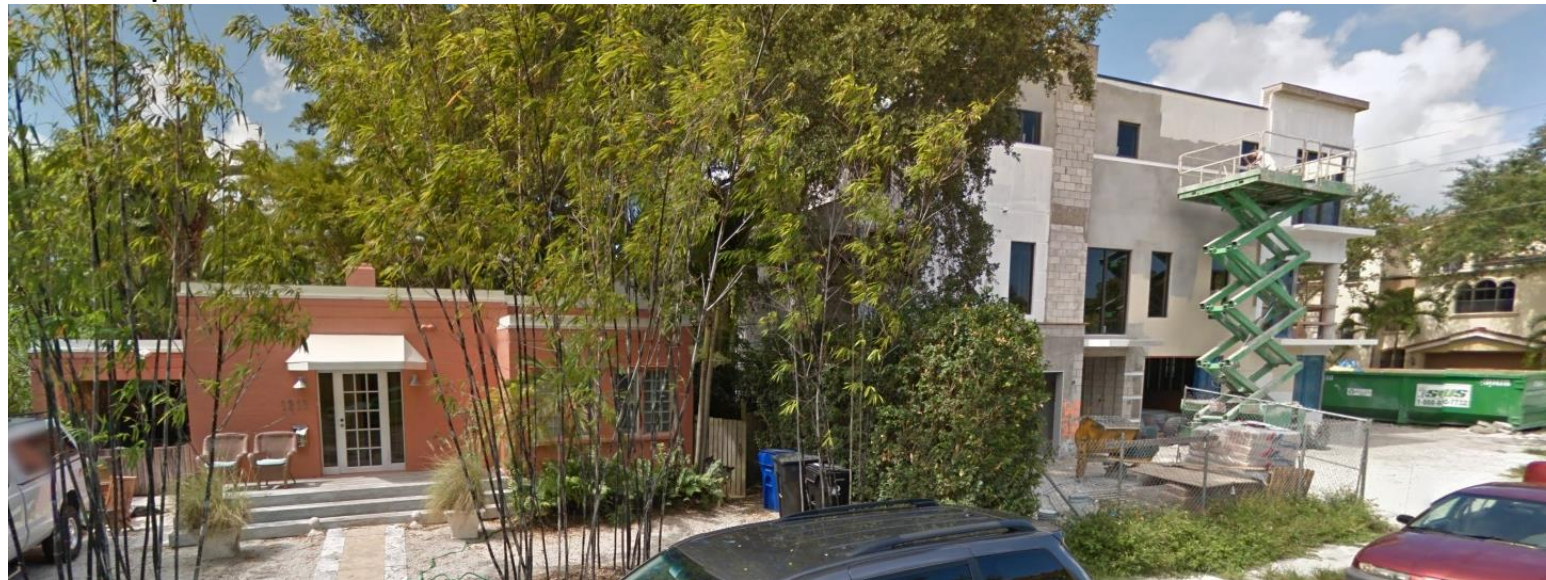


Compatible



Strategies - Height

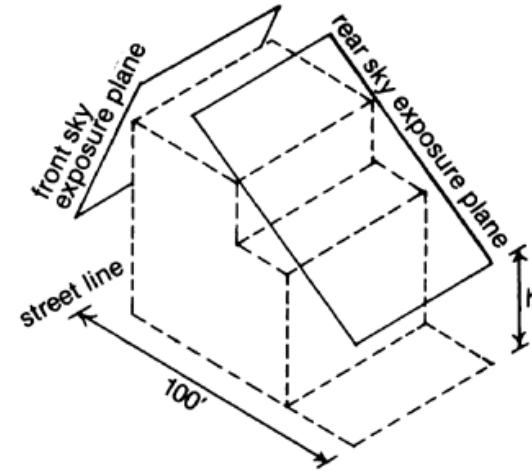
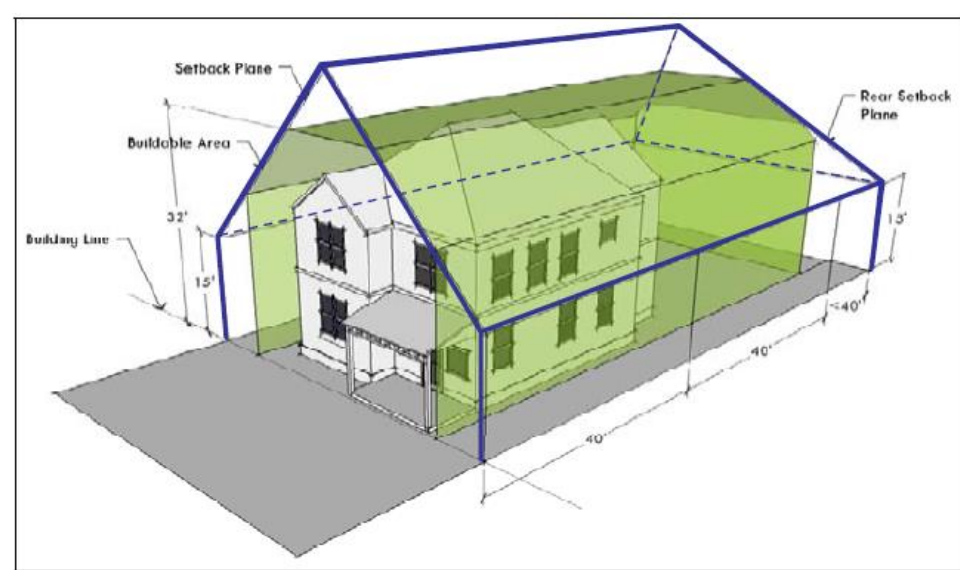
Incompatible



Compatible



Strategies – Stepbacks



Strategies – Community Features



Strategies – Windows/Glazing

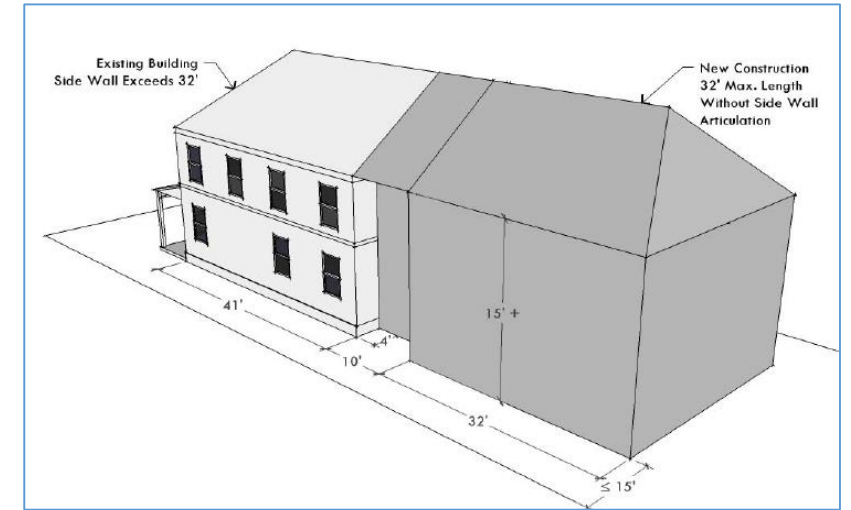
Minimal Glazing



Enhanced Glazing



Strategies – Maximum Wall Lengths



Next Steps:

- Presentations to Neighborhood Associations underway.
- Staff to work with the City Attorney's Office to draft Ordinance amendments.
- Planning and Zoning Board to review and provide a recommendation to the City Commission.
- City Commission consideration of the amended Ordinances.

