



Advanced Plumbing Technology

638 East Highway 50, Suite 4

Clermont, Florida 34711

352.534.1504

Project Proposal

Oakland Park: Main Line Lining of LS C-2 Basin

Nov 04, 2021

Prepared For:

Fernando Martinez

Public Works Manager

Oakland Park, City of

fernandom@oaklandparkfl.gov

About Us

Mission & Vision

To restore every community's underground pipeline infrastructure with integrity and accountability using the most advanced trenchless technologies.

At APT, we are your partners in the pursuit of conquering failing infrastructure, one pipe at a time. We instill value and innovation, above and below ground, in our pursuit to fix your community's pipeline infrastructure.

Our Value

Working With Integrity

Integrity and accountability are at the forefront of everything we do at APT.

Full Circle Solutions Provider

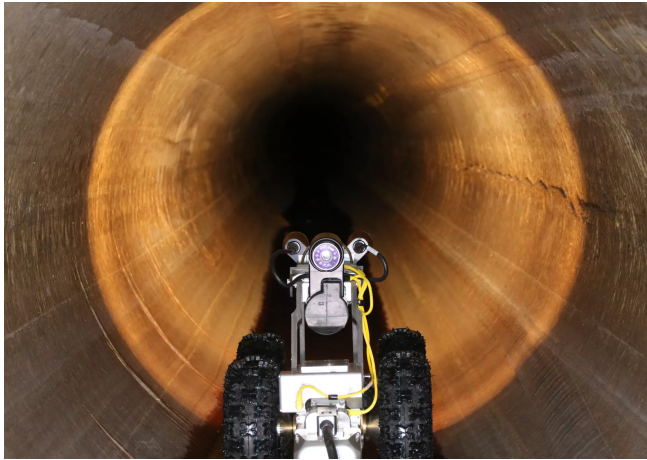
We offer a wide variety of comprehensive inspection and rehab services so you can use one trusted contractor.

Leadership, In Every Role

At APT, everyone is a leader, and we empower our field teams to make decisions on the fly to support your team in the best manner possible.

Experience

With a team that has over 150+ years of combined industry experience and over 3 million+ feet of inspection & CIPP rehab experience, we provide top quality services.



Who We Are

At APT, we are your partners in the pursuit of conquering failing infrastructure, one pipe at a time.

The team at APT loves helping communities, large and small, advance their goals of overcoming challenges related to pipeline infrastructure that every community faces.

By using advanced technologies and most importantly, a team of individuals that are committed to excellence every day in the pursuit of serving each of our customers, we are certain that we can offer each client maximum return on investment for your local community.

Lateral Rehabilitation Program

The Problem

According to the EPA, lateral connections make up 50% of the total length of any sanitary sewer system and are responsible for up to 75% of the I&I, yet are largely unaddressed. Millions of dollars are spent annually on treatment capacity increases and other band aids that do not address the systemic issue.

Countless case studies show that municipalities are not receiving near the reduction in I&I they hoped for through mainline only rehabilitation programs, which again showcases the laterals need to be addressed.

Our Solution

Lateral Lining Before or After Mainline Rehabilitation

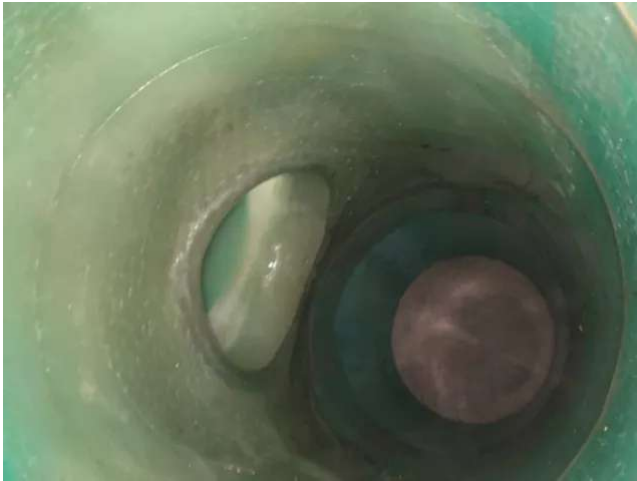
With APT's patented and proven approach using InnerCure Technologies products, we have a revolutionary approach to be able to address the laterals before the mainline has been rehabilitated. This can save substantial funds when you are unnecessarily lining mainline pipe in good condition, simply to address the lateral.

360 Degree Comprehensive Solution

Simply put, the APT approach to lateral rehabilitation is a fully approach to address the main/lateral connection seal and lateral all the way to the building structure creating a jointless, seamless monolithic system.

UV Cold Cured - Non-VOC, Environmentally Friendly

At APT, we believe in an environmentally friendly approach which is why all of our lateral rehabilitation is doing using UV cold cure technology which allows for rapid curing with zero material shrinkage, all while using a Non-VOC resin to eliminate any property owner concerns related to styrene smell or exposure.



Key Issues - Solved!

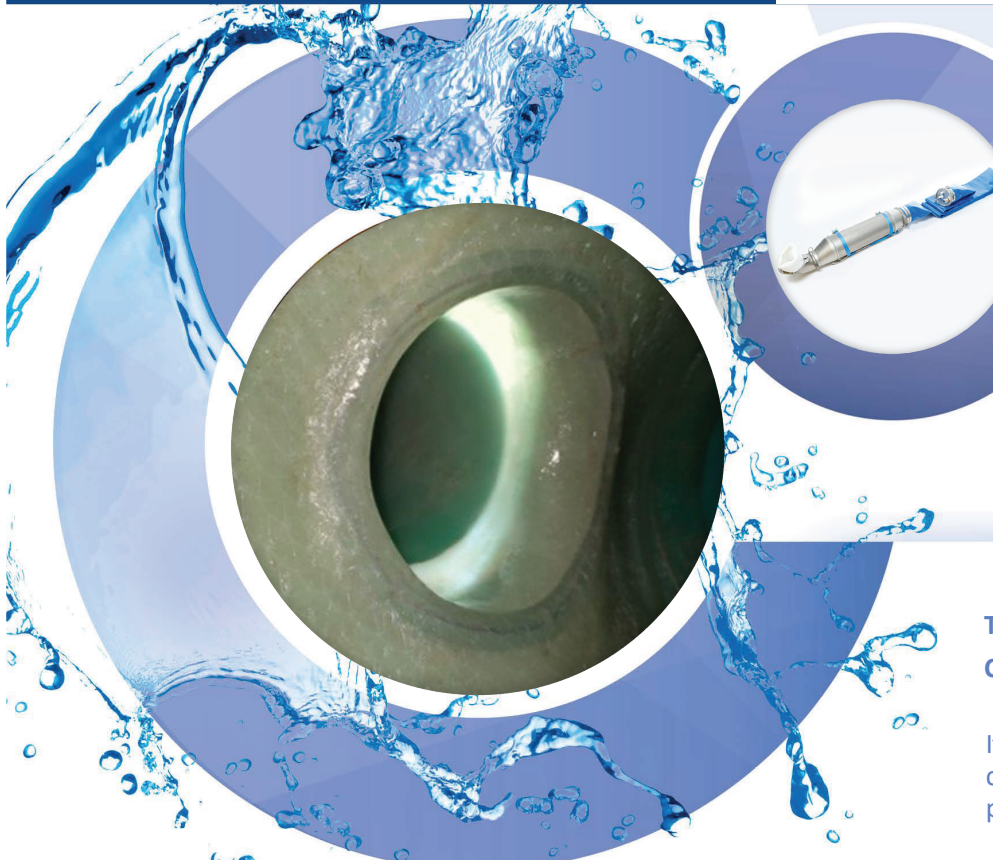
There are key issues that a proper lateral rehabilitation program can solve. The first, addressing environmental concerns related to infiltration, exfiltration, soil contamination, etc.. The second, it simply saves your community money by addressing the systemic issue. It also addresses proper water conveyance reducing the need for plant expansions.

Independent Study

The main to lateral connection seal that APT utilizes was independently tested by Louisiana Tech University and found to hold to pressures up to 500 PSI.



InnerCure
TECHNOLOGIES™



InnerCure Technologies™ Connections

**THE REHABILITATION OF LATERAL
CONNECTIONS JUST GOT BETTER!**

It is now possible to rehabilitate a lateral connection prior to lining the mainline pipeline.

BENEFITS of InnerCure Technologies™ Systems :

- Patented Technology allows the installation of a connection at the lateral with or without lining the mainline.
- Places the bonding surface behind the liner instead of within the liner.
- No need to have "point repairs" inside a recently lined mainline sewer.
- Creates a platform for a more uniform cut at the lateral without damaging the connection repair.
- Alleviates long-term O & M issues.
- Typically no bypass is required.
- InnerCure lateral connections and laterals are installed by fully trained and licensed installers.

InnerCure's lateral lining connection is a cost-effective, water-tight and structural solution to repair damaged or leaking connections to the mainline sewer. **InnerCure's** patented technology allows the utility owner to target specific deficiencies.

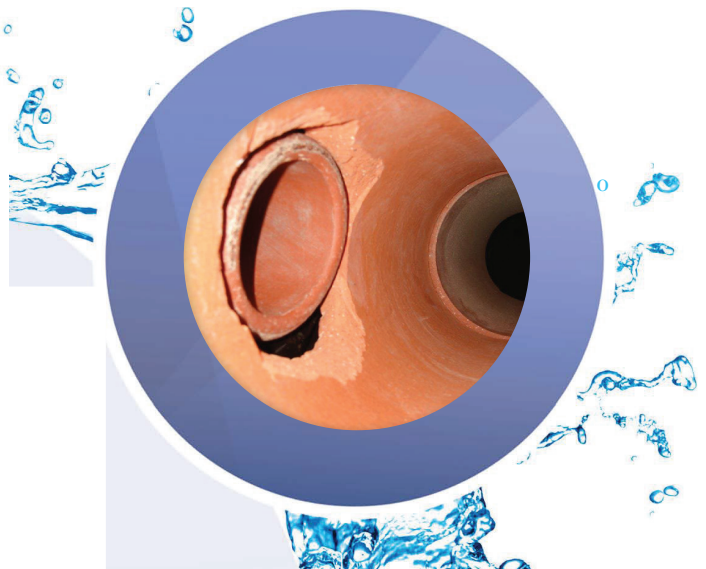
InnerCure systems allow the utility owner to address the lateral connection with or without the need to line the lateral and it does not require lining the mainline sewer. Structural connections can be installed even if the mainline does not require lining at that time.

Economically efficient solution for municipalities



InnerCure
TECHNOLOGIES™

Manufacturer and Distributor for North America:
InnerCure Technologies™, Inc.
1-844-Liners2 (546-3772)
SERVICE@innercuretechnologies.com
www.innercuretechnologies.com



Some of Our Services

Pipe Cleaning

While pipeline cleaning is a relatively straightforward process, it still takes an expert team to do it right the first time.

Here at APT, we have the best personnel in the industry and a high level of accountability to ensure we meet your needs on every cleaning project.

Inspection Services

We offer comprehensive pipeline inspection and condition assessment for pipes from 2" – 203" in diameter.

Understanding your pipeline infrastructure condition is critical to determine life-cycle analysis and potential next steps for rehabilitation based on the overall condition.

CIPP Rehabilitation

Full trenchless pipe rehabilitation at a fraction of the cost of traditional dig-and-replace methods.

Whether you need services in small diameter laterals, sanitary sewer mainlines, or storm lines; we have your team fully covered.

Manhole Rehabilitation

We understand the importance of this often-overlooked sewer asset. Despite manholes often being referred to as the sewer system's windows, they have been mainly overlooked for inspection and rehabilitation efforts up until recently.

APT offers a list of rehab solutions for every manhole scenario.

Inspection Data

Data is important and so it is keeping it safe! APT uses a comprehensive data review cloud platform for inspection review and offers, as an option, unmatched 5-year post-contract data archiving for your team.

All our data complies to NASSCO standards and can be integrated into a variety of programs.

GPS Surveying

GPS collection for any infrastructure asset with sub-foot level accuracy.

By using advanced GPS collection devices, we can give your team highly accurate coordinate data in a variety of formats supporting your GIS efforts.

Some of Our Clients

Recent Client Testimonial

"Myself, and my staff were very impressed with the professionalism, knowledge, and capabilities APT has at their disposal. We are looking forward to working with APT in the future and would recommend APT to any municipality to utilize the services they provide."

Matt Surrency | Mayor of the City of Hawthorne





Oakland Park: Main Line Lining of LS C-2 Basin Proposal

Proposal Date: Nov 04, 2021
Expiration Date: 90 Days from Nov 04, 2021

Prepared for Oakland Park, City of
Fernando Martinez
fernandom@oaklandparkfl.gov
9546304433

SERVICE	UNIT PRICE	QTY	UNIT	LINE TOTAL
Mobilization	\$2,500.00	1	EACH	\$2,500.00
Mainline Cleaning <=12" Dia	\$1.50	7185.7	LF	\$10,778.55
Television Inspection	\$1.00	7185.7	LF	\$7,185.70
Service Reinstatement	\$150.00	106	EACH	\$15,900.00
8" CIPP x 6mm	\$20.00	6516.9	LF	\$130,338.00
10" CIPP x 6mm	\$25.00	668.8	LF	\$16,720.00
Mob/Demob for Bypass	\$200.00	35	Day	\$7,000.00
Sewer Bypass Pumping	\$10.00	106	HR	\$1,060.00
Full Wrap Main/Lateral Connection Seal - PLC	\$1,800.00	13	EACH	\$23,400.00
C2-57 to C2-58 & C2-58 to C2-61				
Lateral Lining Up to 30 Feet - PLC	\$3,100.00	13	EACH	\$40,300.00
C2-57 to C2-58 & C2-58 to C2-61				
Total				\$255,182.25

Sincerely,

Mark French

Advanced Plumbing Technology

Proposal Acceptance for Oakland Park, City of

Acceptance Date

General Terms & Conditions: All of APT's General Terms & Conditions are viewable on our website at sewerfix.com/municipal/terms-and-conditions.php