




City of Oakland Park Municipal Boundary

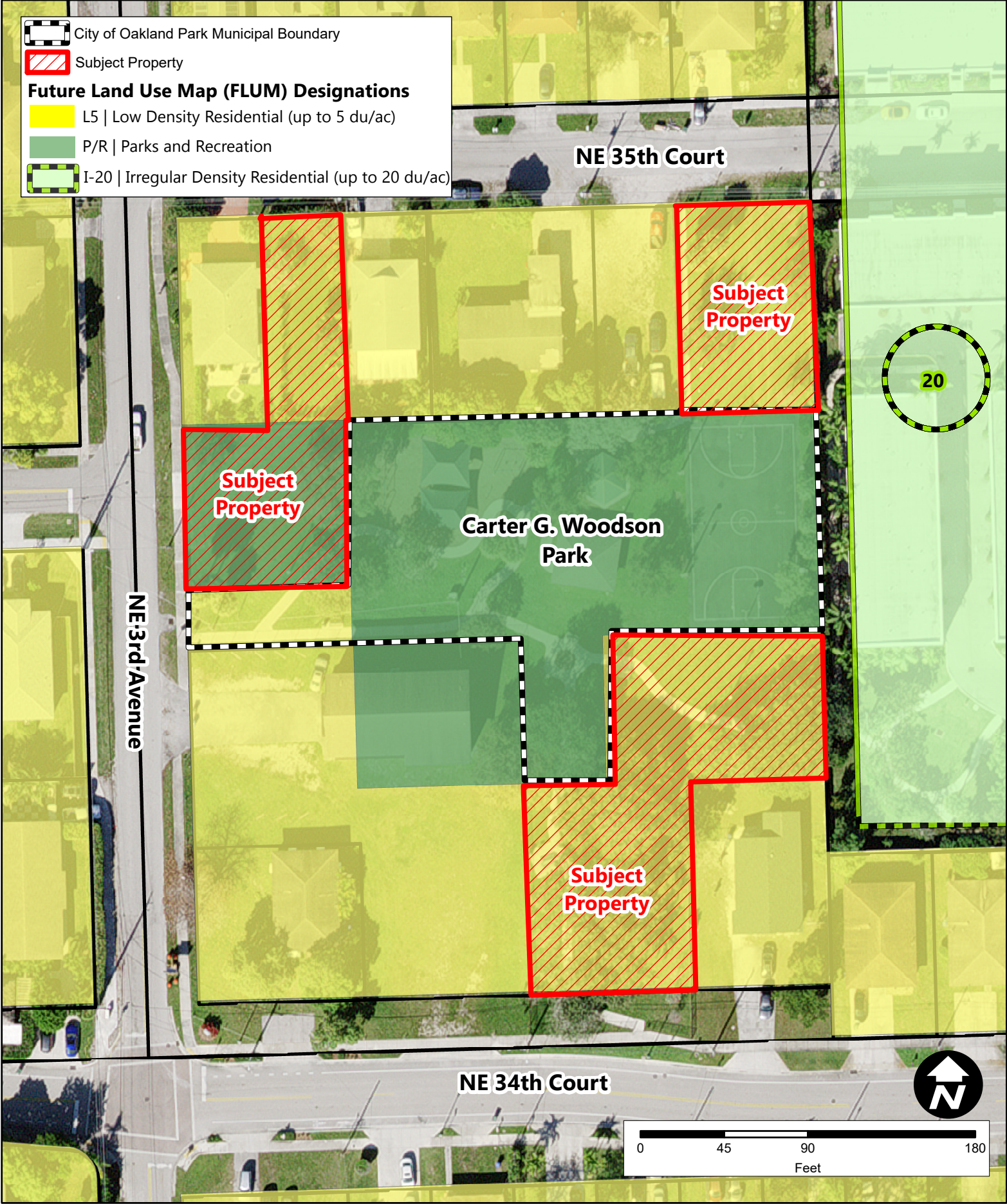

Subject Property

Future Land Use Map (FLUM) Designations


L5 | Low Density Residential (up to 5 du/ac)


P/R | Parks and Recreation


I-20 | Irregular Density Residential (up to 20 du/ac)



Planning & Zoning Division
5399 N. Dixie Highway, Suite # 3
Oakland Park, FL 33334
Tel: 954.630.4339
Created by Craig Southern, CFM
craig.southern@oaklandparkfl.gov

City of Oakland Park
Planning and Zoning Board
July 17, 2023

Future Land Use Map
Rezoning | CD23-14RZ
Carter G. Woodson Park
3490 NE 3rd Avenue

Map
2.0