



City of Oakland Park Municipal Boundary



Subject Property

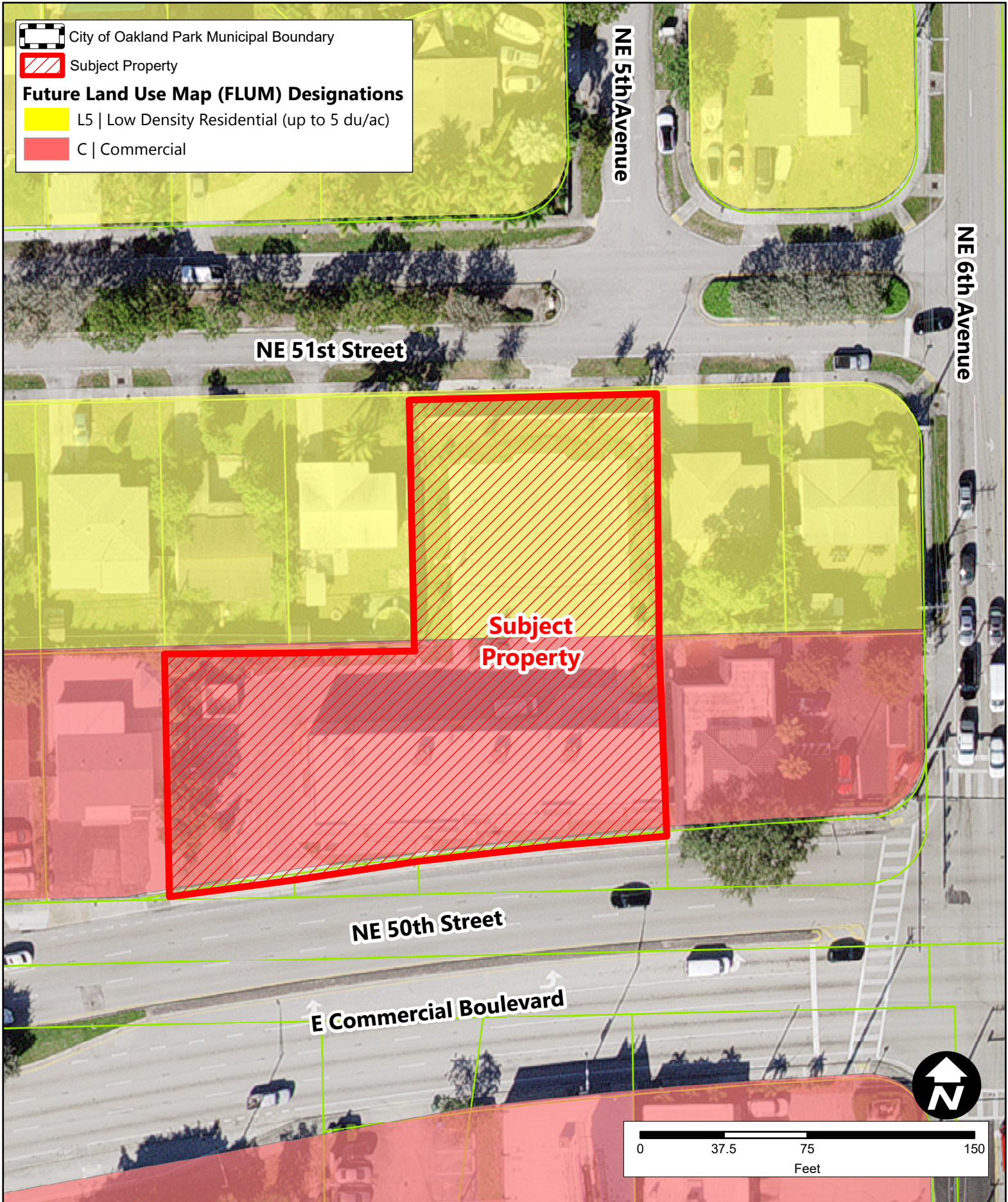
Future Land Use Map (FLUM) Designations



L5 | Low Density Residential (up to 5 du/ac)



C | Commercial



Planning & Zoning Division
5399 N. Dixie Highway, Suite # 3
Oakland Park, FL 33334
Tel: 954.630.4339
Created by Craig Southern, CFM
craig.southern@oaklandparkfl.gov

City of Oakland Park

Planning and Zoning Board
July 17, 2023

Future Land Use Map
Conditional Use | CD23-04CU
Penny's Tint Pet Shop
491 NE 50th Street

Map
2.0