

LEGEND

- PROPERTY LINE
- - - RIGHT-OF-WAY DEDICATION
- - - SETBACK LINE
- - - ENCROACHMENT LINE
- - - BUFFERYARD
- CENTERLINE
- RETENTION AREA
- FLOOD ZONE
- ELECTRIC CHARGING SPACES
- BIKE RACK
- DUMPSTER ENCLOSURE
- R.O.W DEDICATION

M/E/P ENGINEERS
HAMPOND ENGINEERS
 18800 NW 2nd Ave, Suite 216
 Miami, Florida 33169
 (305) 551-5522

Civil Engineers
BOYK THURLOW ENGINEERING, INC.
 3409 NW 9th Ave, Suite 1102
 Ft. Lauderdale, Florida 33309
 (954) 569-8686

Architects
ZYSOVICH, Inc.
 100 N. Biscayne Blvd, 27th Floor
 Miami, Florida 33132
 (305) 575-5522

Owner
Urban League of Broward County
 560 NW 27th Avenue
 Ft. Lauderdale, Florida 33311
 (954) 555-5532

Architects
LANDSCAPE ARCHITECTURE
RVI
 111 N. Magnolia Ave, Suite 1350
 Coral Gables, Florida 33134
 (305) 441-5881

Architects
LANDSCAPE ARCHITECTURE
ATWELL, LLC.
 11770 US Highway One, Suite E308
 Palm Beach Gardens, Florida 33420
 (561) 670-4888

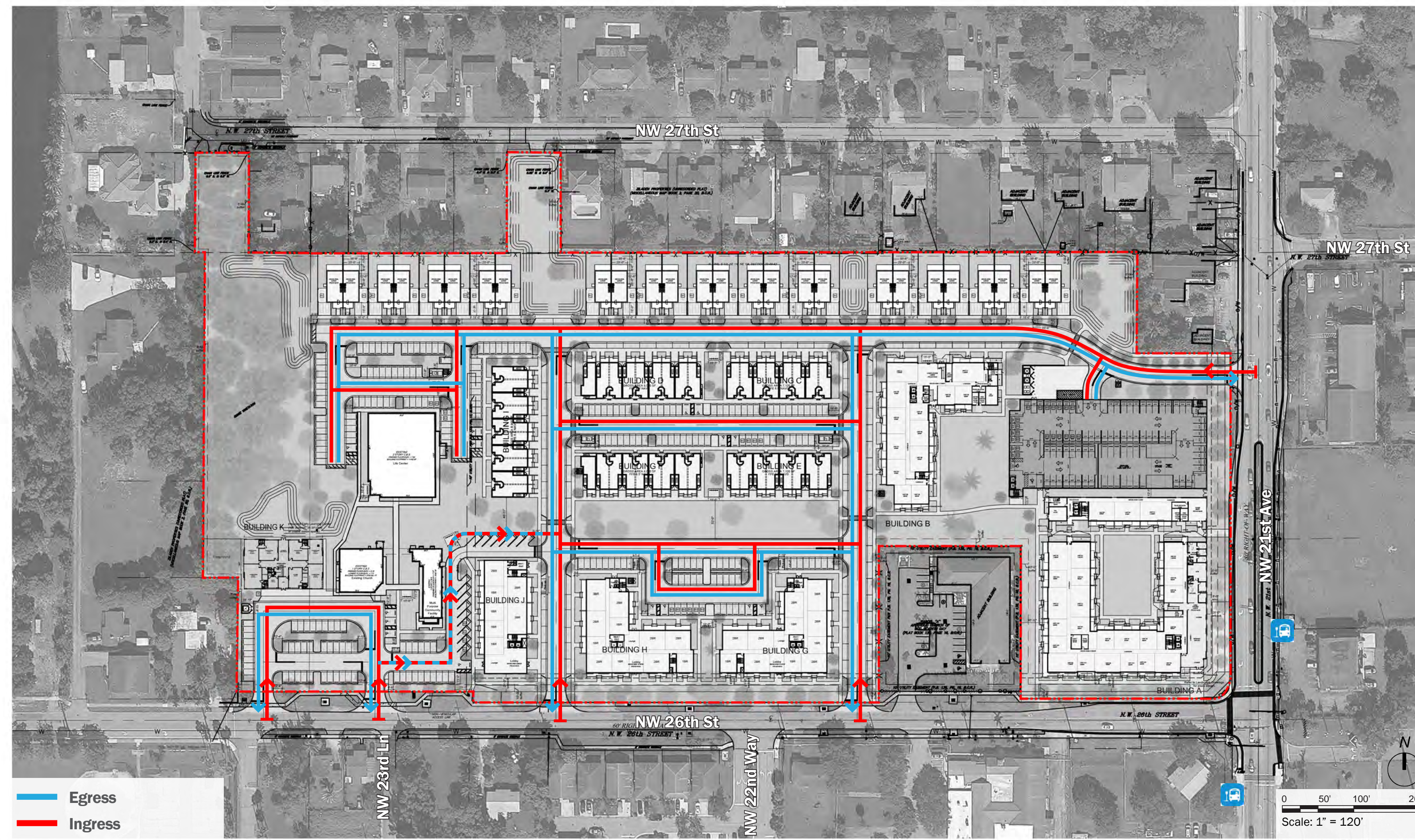
Project: Urban League of Broward County
THE VILLAGE AT OAKLAND PARK
 Project No. CD22-29P/LUPAR/PUD

Copyright © 2023 ZYSOVICH, INC. ALL RIGHTS RESERVED. THESE DRAWINGS AND SPECIFICATIONS ARE PREPARED BY SERVICE AND SHALL REMAIN THE PROPERTY OF ZYSOVICH, INC. NO PART OF THESE DRAWINGS OR SPECIFICATIONS ARE TO BE REPRODUCED OR TRANSMITTED IN ANY FORM OR BY ANY MEANS, ELECTRONIC OR MECHANICAL, INCLUDING PHOTOCOPYING, RECORDING, OR BY ANY INFORMATION STORAGE AND RETRIEVAL SYSTEM, WITHOUT THE WRITTEN PERMISSION OF ZYSOVICH, INC. NO PART OF THESE DRAWINGS OR SPECIFICATIONS ARE TO BE REPRODUCED OR TRANSMITTED IN ANY FORM OR BY ANY MEANS, ELECTRONIC OR MECHANICAL, INCLUDING PHOTOCOPYING, RECORDING, OR BY ANY INFORMATION STORAGE AND RETRIEVAL SYSTEM, WITHOUT THE WRITTEN PERMISSION OF ZYSOVICH, INC.

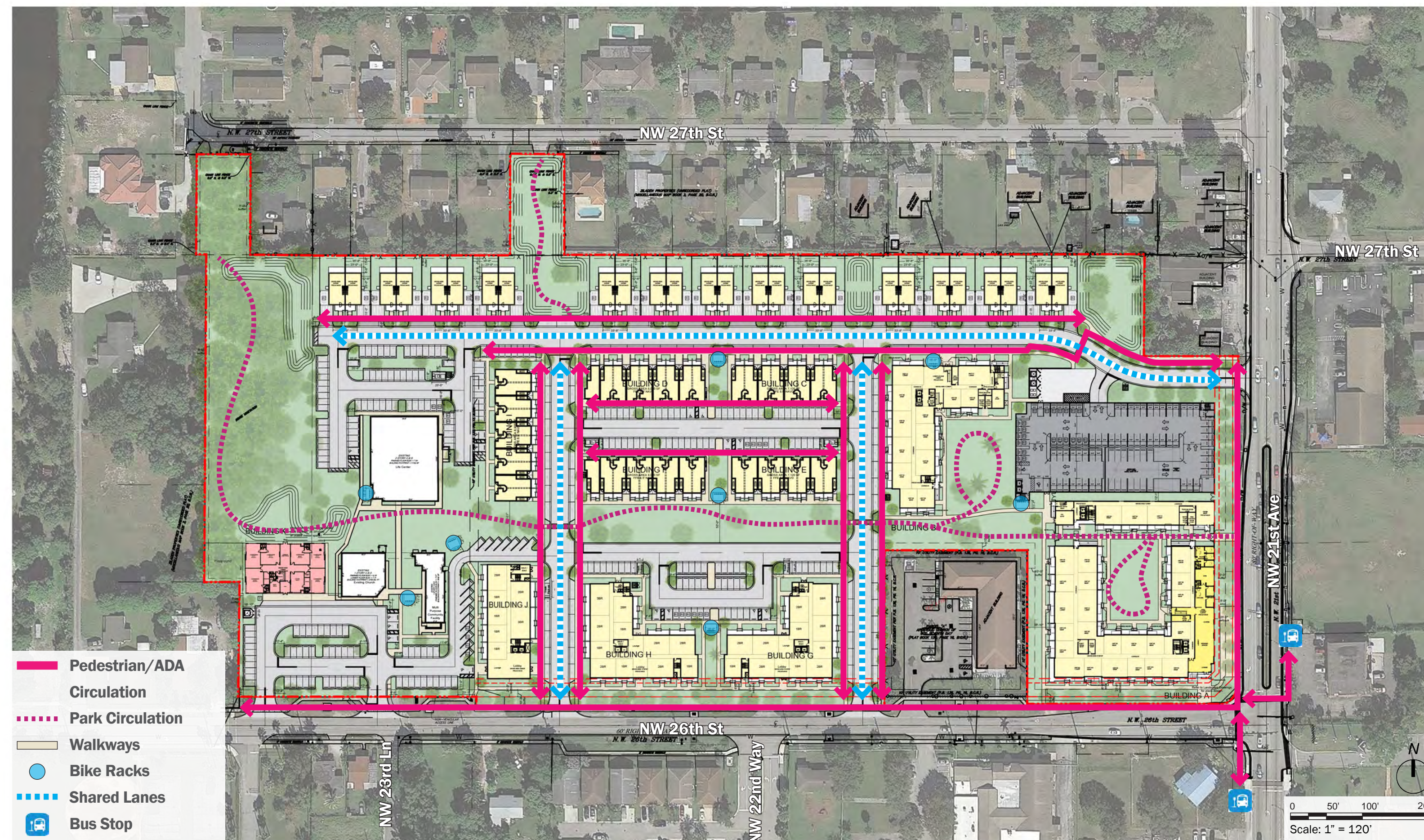
Revised:

MASTER SITE PLAN
 2226ULDO 11/22/2023
 PUD SET 11-22-2023
 SP-1

VEHICULAR CIRCULATION



PEDESTRIAN & BICYCLE CIRCULATION



Pedestrian and ADA-compliant circulation extends throughout the development. The plan strategically positions sidewalks and crosswalks to facilitate pedestrian movement within the development and prioritize safety. These pathways establish connections to all nearby bus stations located on NW 21st Avenue, enhancing accessibility and connectivity for residents and visitors alike.

The introduction of shared lanes contributes to the increased visibility and awareness among all road users. This approach promotes a traffic-calming effect while encouraging a sustainable mode of transportation.

<p>M/E/P Engineers HAMMOND ENGINEERS 18800 NW 2nd Ave, Suite 216 Miami, Florida 33169 (305) 851-6522</p>
<p>Civil Engineers BOTEK THURLOW ENGINEERING, INC. 3408 NW 9th Ave, Suite 1102 FT. Lauderdale, Florida 33309 (954) 569-6669</p>
<p>Architects ZYSKOVICH, Inc. 100 N. Biscayne Blvd, 27th Floor Miami, Florida 33132 (305) 575-5222</p>
<p>Owner Urban League of Broward County 560 NW 27th Avenue FT. Lauderdale, Florida 33311 (954) 625-5352</p>
<p>Landscaper RVI 111 N. Magnolia Ave, Suite 1350 Orlando, Florida 32801 (407) 620-3729</p>
<p>Architects DESIGN2FORM 2001 Tyler St, Suite 103 Palm Beach Gardens, Florida 33420 (561) 670-4888</p>
<p>Land Planning ATWELL, LLC. 11770 US Highway One, Suite E508 Palm Beach Gardens, Florida 33420 (561) 993-1900</p>

Project: **Urban League of Broward County**
THE VILLAGE AT OAKLAND PARK
Project No. CD22-29P/LUPA/RZ/PUD

COPYRIGHT © 2023 ZYSKOVICH, INC. ALL RIGHTS RESERVED. THESE DRAWINGS AND SPECIFICATIONS ARE INSTRUMENTS OF SERVICE AND SHALL REMAIN THE PROPERTY OF ZYSKOVICH, INC. NO REUSE OR REPRODUCTION OF ANY PART OF THESE DRAWINGS OR SPECIFICATIONS IS PERMITTED WITHOUT THE WRITTEN CONSENT OF ZYSKOVICH, INC. IS PROHIBITED.

Revised:	

CIRCULATION DIAGRAMS
2226ULDO 11/22/2023

NOT FOR CONSTRUCTION

PUD SET 11-22-2023