
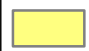

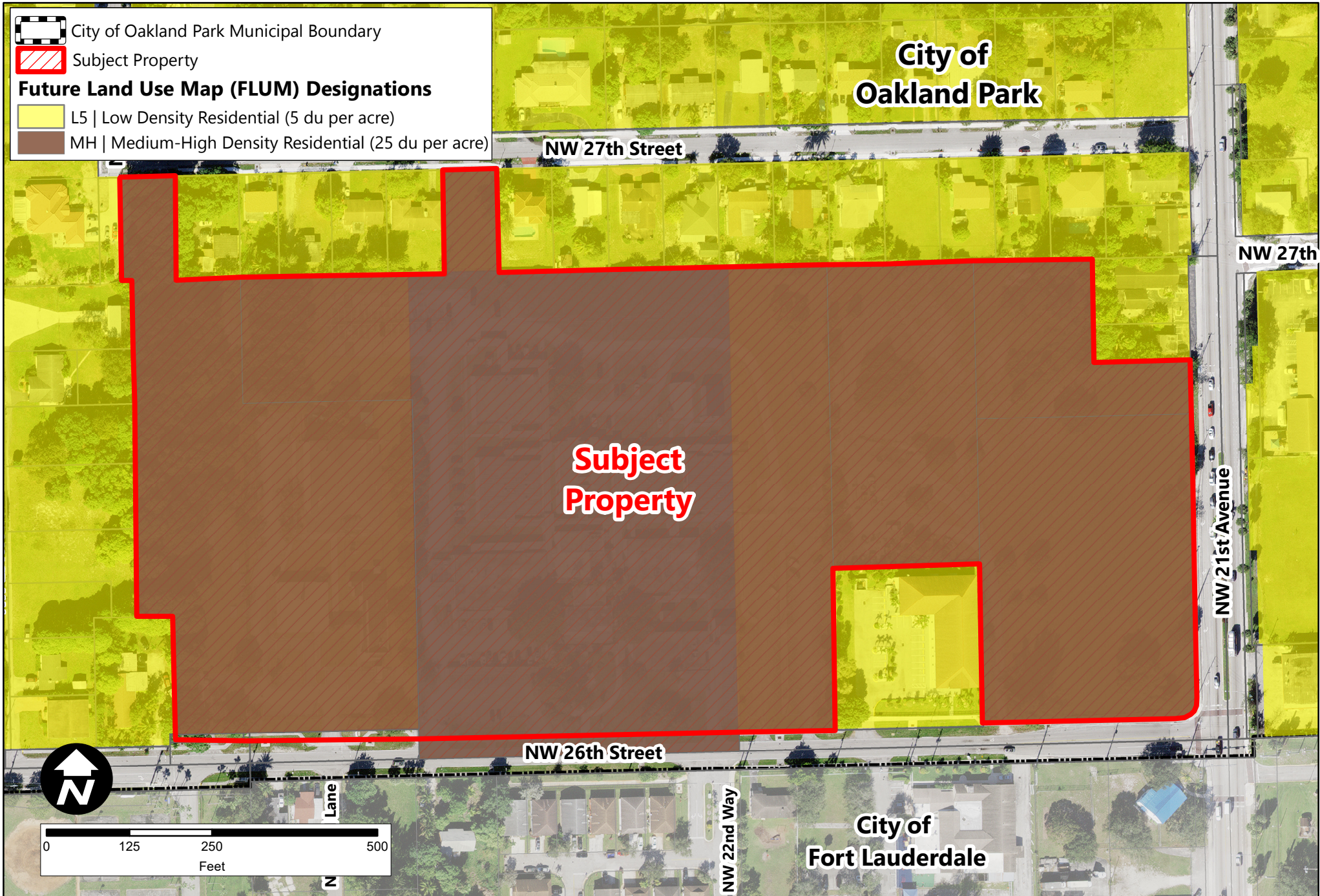
 City of Oakland Park Municipal Boundary

 Subject Property

Future Land Use Map (FLUM) Designations

 L5 | Low Density Residential (5 du per acre)

 MH | Medium-High Density Residential (25 du per acre)



 Planning & Zoning Division
 5399 N. Dixie Highway, Suite # 3
 Oakland Park, FL 33334
 Tel: 954.630.4339
 Created by Craig Southern, CFM
craig.southern@oaklandparkfl.gov

City of Oakland Park
 City Commission
 February 7, 2024

Proposed FLUM Map
 The Village @ Oakland Park PUD
 CD22-30RZ | Zoning Map Amendment
 CD22-29PUD | Master Development Plan
 Located at the northwest corner of
 NW 21st Avenue and NW 26th Street

**Map
 4.0**